



Air Handling Units
Product overview

Air handling units for all applications

Customised, innovative solutions from planning to final installation

WOLF GmbH
Postfach 13 80
84048 Mainburg, Germany
Tel. +49 (0)87 5174-0
E-Mail. info@wolf.eu
www.wolf.eu

Contents

WOLF Group	
The company	04
Reference projects	06
Certificates	07
Air Handling Units	
Solutions for all applications	08
CSL-800	11
CKL evo	12
CRL and CRL evo max	13
CFL	14
CGL 2 edu	15
CFL edu	16
Pool units	17
KG Top	18
KG Flex	20
Technologies	
Clima Split system	22
Integrated heat pump and cooling technology	23
Energy centre	24
Fan and humidification	25
Casing	26
Run-around coil system	28
Special Versions	
Hygiene	30
ATEX	31
Control	32
Plug & Play	33
Tools	34
WOLF Campus	36
Product Range Overview	38

This is WOLF

At WOLF we have been advising and supporting our partners in all their projects for almost 60 years.

From simple installations to the most complex systems, WOLF develops customised solutions.

- System provider for heating and air handling
- Individual solutions for private customers, commerce and industry
- Perfect compatibility between all components
- Smart tools and the simplest possible operation
- Production facilities in Germany and Croatia
- Our appliances: Durable. Efficient. Environment friendly.





60 Sales partners
in 50 countries

500,000 Produced RLT-
units since 1963

2,100 Employees
worldwide



14 Sales offices
in Germany

9 Subsidiaries in
different countries

Reference projects from all over the world



Educational buildings

- Educational Campus Riensförde, Stade (DE)
- British Council, Madrid (ES)
- Lycée Hippolyte Fontaine, Dijon (FR)
- Elementary schools, Bielefeld (DE)
- De Haagse Hogeschool, The Hague (NL)
- Catholic University, Leuven (BE)
- School of Medicine, University of Zagreb (HR)
- Schools and kindergardens, Kassel (DE)
- Technohal UT Twente, Enschede (NL)

Shopping centres

- Amazing Oriental Rotterdam-Centrum, Rotterdam (NL)
- De Bijenkorf, Amsterdam (NL)
- Centro Comercial El Tiro, Murcia (ES)
- FOC – Factory Outlet Center, Brehna (DE)
- Shopville Gran Reno, Bologna (IT)
- Z center, Split (HR)

Industrial buildings

- Audi, Ingolstadt (DE)
- Belupo, Koprivnica (HR)
- BMW, Landshut (DE)
- Bosch, Drancy (FR)
- Ferrari Automotive, Maranello (IT)
- Glas Trösch, Strasbourg (FR)
- Haribo, Graftschaft (DE)
- Kühne Nagel, Veghel (NL)

Kitchens

- Augustiner-Bräu, Munich (DE)
- Gate Gourmet, Madrid (ES)
- Hooters St. Pauli, Hamburg (DE)
- KB Hospital kitchen, Rijeka (HR)
- VTI, Leuven (BE)

Hospitals

- Antonius Hospital, Sneek (NL)
- Asklepios Harburg (DE)
- Autocruise ISO 7, Brest (FR)
- Hospital Universitario Vall d'Hebron, Barcelona (ES)
- KBC Rebro, Zagreb (HR)
- Noordwest Ziekenhuis, Den Helder (NL)
- Nuclear Medicine, Leverkusen (DE)

Swimming pools

- Amarena, Amersfoort (NL)
- Centre aquatique de La Pommeraye, Les Mauges sur Loire (FR)
- City pool Svetice, Zagreb (HR)
- Osmose – Centre aquatique du Grand Longwy, Longwy (FR)
- Rulantica water world, Rust (DE)

Sport facilities

- ARENA multipurpose event site, Zagreb (HR)
- Straubing ice stadium, Straubing (DE)
- FitX Germany, nationwide (DE)
- Gimnasio – McFit, Madrid (ES)
- Stade Roland-Garros, Paris (FR)
- Spaladium Arena sport hall, Split (HR)

Office buildings

- Gresmalt headquarters, Modena (IT)
- Huis van Delft, Delft (NL)
- Park 7, Diegem (BE)
- Siège VINCI, Rueil Malmaison (FR)
- Siemens Campus, Erlangen (DE)
- Sky office, Zagreb (HR)
- Dancing Towers, Hamburg (DE)
- TÜV Süd, Munich (DE)

Hotels & catering

- Cantina di Cortaccia, Kurtatsch (IT)
- Hilton Hotel, Schiphol (NL)
- Hotel Kompas, Dubrovnik (HR)
- Hyatt Hotel, Madrid (ES)
- Restaurant Le Jules Verne, Paris (FR)
- L'Osteria, Hamburg (DE)
- Motorworld, Cologne (DE)

Airports

- Aéroport de Paris Orly, Paris (FR)
- Airbus, Finkenwerda (DE)
- Aeropuerto Adolfo Suárez Madrid-Barajas, Madrid (ES)
- Franjo Tuđman Airport, Zagreb (HR)
- Franz-Josef-Strauß Airport, Munich (DE)

ATEX solutions

- AD Plastik, Zagreb (HR)
- Airbus, Toledo (ES)
- FACC factory, Jakovlje (HR)
- Frey + Lau, Hamburg (DE)
- tesa Werk, Hamburg (DE)
- Stadler Germany, Berlin (DE)

Certified and safe

Quality at highest level

For maximum safety, efficiency and quality in system planning: WOLF air handling meets the current strict requirements, regulations and legal standards. This applies equally to structural, energy and hygiene criteria.

We actively engage with professional bodies, quality associations, trade associations and other institutions to ensure that we are ready to comply with future standards without delay. That is why we give planners, builders and operators answers to future-oriented topics such as:

- Energy-conscious construction – “Green Building”
- Healthy indoor climate vs. sick building syndrome (SBS)
- Comprehensive building cost management – “Lifecycle Costs”



German AHU Manufacturers Association

Definition of energy efficiency classes and labels based on EN 13053 A1 2010. WOLF meets all requirements as per "RLT-TÜV-01" and is authorised to use test marks for energy efficiency classes A+, A and B.



ATEX, directives on explosion protection

ATEX certification by TÜV SÜD confirms that WOLF complies with the directives for equipment and protection systems intended for use in explosive atmospheres 94/9/EC.



CE mark

WOLF confirms conformity with EU regulation 765/2008 for all appliances and is authorised to sell them in the markets of the European Union.



Hygiene

Wolf air handling units meet the hygienic requirements of VDI 6022* and, if required, DIN EN 1946-4 for use in operating rooms.



EUROVENT

WOLF participates in the ECP programme for Air Handling Units. Check ongoing validity of certificate:
www.eurovent-certification.com



ISO 9001

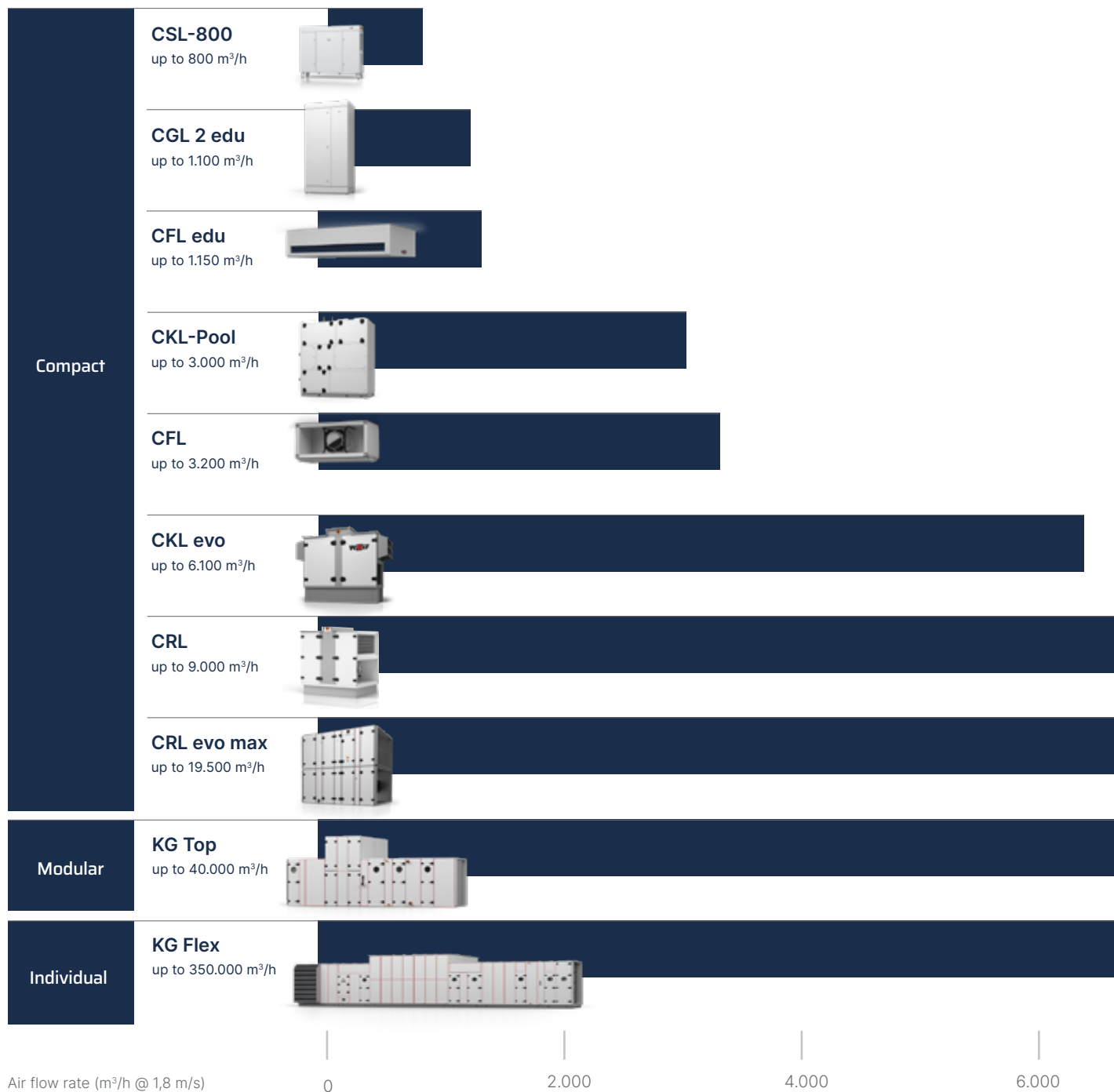
Certified quality management in the company.

* optical filter display optional

Solutions for all applications

From compact to individual

WOLF is your strong partner for air handling systems – for every application and building conditions.



Air flow rate (m³/h @ 1,8 m/s)

0

2.000

4.000

6.000



Use the AHU configurator to find the right AHU in just a few clicks!



The AHU configurator generates a good foundation for the next planning steps:

- 3D representation of the implemented configuration
- Indication of efficiency classes
- Generation of drawing and data sheet

More info on page 35.

8.000

10.000

20.000

40.000

350.000

Compact units

Compact appliances in premium quality

Compact units, quick delivery, straightforward installation. To ensure that there are no problems with a project due to overestimated space availability, delivery times or high operating or purchase costs, the “extra compacts” from WOLF are a perfect choice. Always large enough to ensure maximum comfort and small enough to be deployed anywhere.

Advantages of the series:

- Prewired units for quick and easy commissioning
- Premium field devices: Highly efficient, variable-speed EC fans (energy efficiency class IE4 as per DIN EN 60034-30)
- Robust & coated casing (optional for CFL)
- Outdoor units: The CKL evo and CRL series in a weatherproof design
- Remote access with WOLF Link pro via the SmartSet portal as a web application or mobile app
- Tried-and-tested WRS-K control unit with many programmable inputs and outputs provided as standard
- Large range of BMS interfaces (LON, BACnet, Ethernet, Modbus and KNX)
- Extensive range of accessories
- Very short standard delivery times

CSL-800 compact ventilation unit

Maximum flexibility for minimum installation effort

- Developed and optimised for low flow rates up to 800 m³/h
- Mounting options for all room situations: Standing, wall, ceiling
- Supply air on left or right side
- Wide range of flow rate control options:
 - > flow rate control based on integrated sensors
 - > percentage-based fan control
 - > demand-controlled volume flow
 - > constant channel pressure control (no accessories necessary)
- Heat recovery via high-performance plate heat exchanger with efficiency of over 90%
- Optional enthalpy heat exchanger for moisture recovery
- Integrated bypass for night ventilation as standard feature
- Extensive accessories for air conditioning
- Compliance with the highest hygiene requirements as per VDI 6022*
- WOLF WRS-K control system with interfaces for building management system
- Integrated energy monitoring for fans and heat recovery



CSL-800

Flow rate	m ³ /h	300 - 800
Nominal flow rate at 150 Pa (ext.) pressure	m ³ /h	710
Dimensions (H** x W x D)	mm	1.159 × 1.380 × 340
Weight	kg	127
Housing colour	RAL	9016

* optical filter display optional

**Including 126 mm feet



More information:
www.wolf.eu/csl-800



CKL evo compact ventilation unit

with plate heat exchanger

The CKL evo is available as an indoor unit with vertical or horizontal duct connection (CKL-iV/iH evo) and as a weatherproof outdoor unit CKL-A evo.

Advantages:

- Double filter stage for maximum hygiene requirements as well as numerous extension modules and extensive accessories
- Night ventilation (cooling) with bypass mode as standard
- Heat recovery: Heat recovery factors up to and exceeding 90%



		1400	2400	3300	4700	6100
Max. air volume	m ³ /h	1,400	2,400	3,300	4,700	6,100
Height	mm	1,017	1,424	1,424	1,424	1,424
Width	mm	1,525	2,033	2,033	2,237	2,237
Depth	mm	750	750	950	1,360	1,665
Weight	kg	250	360	450	645	725

More information:
www.wolf.eu/ckl-evo



CRL and CRL evo max compact ventilation unit

with rotary heat exchanger

The CRL line of units features high performance rotary heat exchangers and various duct connection options. This makes them ideal for flexible applications.

- Wide range of rotor types:
 - > Sorption rotor – recommended by WOLF
 - > Enthalpy rotor
 - > Condensation rotor
- Patented WOLF labyrinth seal with a leakage rate of only 2%
- Easy installation of slimline units and units supporting disassembly
- Wide range of air duct routing options
 - Indoor installation:
 - > Bottom horizontal _ top vertical (iD)
 - > Horizontal (iH)
 - > Bottom horizontal – top vertical/horizontal (iHD)
 - Weatherproof outdoor installation: Horizontal (A)



CRL		1300	2500	3500	4800	6200	9000
Max. air volume	m ³ /h	1,300	2,500	3,500	4,800	6,200	9,000
Height	mm	1,017	1,424	1,424	1,424	1,424	1,627
Width	mm	1,525	1,626	1,626	1,728	1,932	2,136
Depth	mm	750	950	1,155	1,360	1,665	2,070
Weight	kg	266	381	470	590	715	845

CRL evo max		11,000	13,500	16,500	19,500
Max. air volume	m ³ /h	11,000	13,500	16,500	19,500
Height	mm	2,034	2,644	2,644	2,644
Width	mm	2,950	2,950	2,950	2,950
Depth	mm	1,970	1,970	2,275	2,580
Weight	kg	1,370	1,550	1,790	2,020



CFL-EC slimline ventilation unit

with plate heat exchanger

The compact installed heights of CFL appliances make them ideal for use in suspended ceilings. They are available in four different sizes as pure supply or extract air units (CFL-EC) or equipped with highly efficient heat recovery (CFL-WRG).

- Fans designed as free-running impellers are infinitely variable with EC technology
- Heat recovery with an efficiency of over 90% using an aluminium countercurrent plate heat exchanger (PHE)
- Flat, compact design enables easy integration and assembly
- Wide range of accessories available



CFL		10 WRG	15 WRG	22 WRG	32 WRG
Max. air volume	m ³ /h	1,000	1,500	2,200	3,200
Height	mm	367	367	411	495
Width	mm	1,017	1,423	1,830	1,932
Depth	mm	1,322	1,322	1,525	1,932
Weight	kg	130	160	240	340

 More information:
www.wolf.eu/cfl



CGL 2 edu compact ventilation unit

The decentralised, floorstanding AHU

Features:

- Whisper quiet with a very high flow rate
- CO₂-based flow rate as standard
- Heat recovered by means of a high performance plate heat exchanger with efficiency of over 90%
- Optional enthalpy heat exchanger for moisture recovery
- Integral bypass as standard for night ventilation
- Integrated damper for outdoor and extract air
- Compliance with the highest hygiene requirements as per VDI 6022*
- Optional second filter stage in supply air line
- WOLF WRS-K control system with interfaces for building management system
- Optional integration of electric preheater and reheaters
- Various options for air distribution in the room



CGL 2 edu

Max. air volume	m ³ /h	1,100		
Flow rate at 35 dB(A) sound pressure level*	m ³ /h	930		
Sound pressure level *	dB(A)	28 (600 m ³ /h)	32 (800 m ³ /h)	37 (1,000 m ³ /h)
Dimensions (H x W x D)	mm	2,133 × 1,070 × 620		
Weight	kg	283		

Including Intake silencer and exhaust module

* optical filter display optional

** Determined by TÜV Süd Industrie Service GmbH at a distance of 1 m as per DIN EN ISO 11203



More information:
www.wolf.eu/cgl-edu-2



CFL edu compact ventilation unit

The decentralised, ceiling-mounted AHU

Features:

- Extremely quiet with a very high flow rate
- Efficient plate heat exchanger for heat recovery
- Integrated electrical preheating coil
- VDI 6022*-compliant
- Integral bypass as standard for night ventilation
- Integrated wide-angle nozzles for very good air distribution without an additional duct network
- WOLF WRS-K control system with BacNet interface and much more



CFL edu		675	1000
Max. air volume	m ³ /h	675	1,150
Sound pressure level	dB(A)	35 (500 m ³ /h)*	35 (850 m ³ /h)**
Height	mm	540	600
Width	mm	1,708	2,303
Depth	mm	1,170	1,300
Weight	kg	210	275

 More information:
www.wolf.eu/cfl-edu



* optional filter display optional

** Provisional value for sound pressure level at 1 m distance as per DIN EN ISO 11203

*** Determined by TÜV Süd Industrie Service GmbH at a distance of 1 m as per DIN EN ISO 11203

Pool units

Highly efficient air dehumidification

The portfolio for pool applications from WOLF includes the CKL Pool as a compact unit as well as the KG Flex Pool with modular device sizes, both with numerous options. Both variants are specially designed to intelligently condition indoor swimming pools.

Advantages:

- Continuous ventilation and dehumidification
- Complete system with fully integrated heat pump and control unit
- High efficiency thanks to the heat recovery system
- Resistant to corrosion: fully coated
- Unit fully wired and ready to connect
- Easy installation and quick start-up



		CKL-Pool 20	CKL-Pool 30	KG Flex Pool
Max. air volume	m ³ /h	2,000	3,000	Individual
Height	mm	1,840	2,040	Individual
Width	mm	1,755	2,155	Individual
Depth	mm	805	855	Individual
Weight	kg	670	800	Individual



Modular appliances KG Top

Countless options and impressive
technical features

- **Maximum flexibility**
For requirements up to 40,000 m³/h.
- **Other advantages:**
 - > Also available with stainless steel panels
 - > Heating coil as per VDI 6022 as standard.
 - > Highly efficient energy recovery system
 - > HV-tested to VDE 0700 as standard
 - > Customer service provided by WOLF TGA experts
 - > Manufacturer commissioning and factory commissioning and on site installation support on request

ATEX version available

KG Top devices with ATEX certificate according to Directive 94/9/EC guarantee safe use in potentially explosive areas.

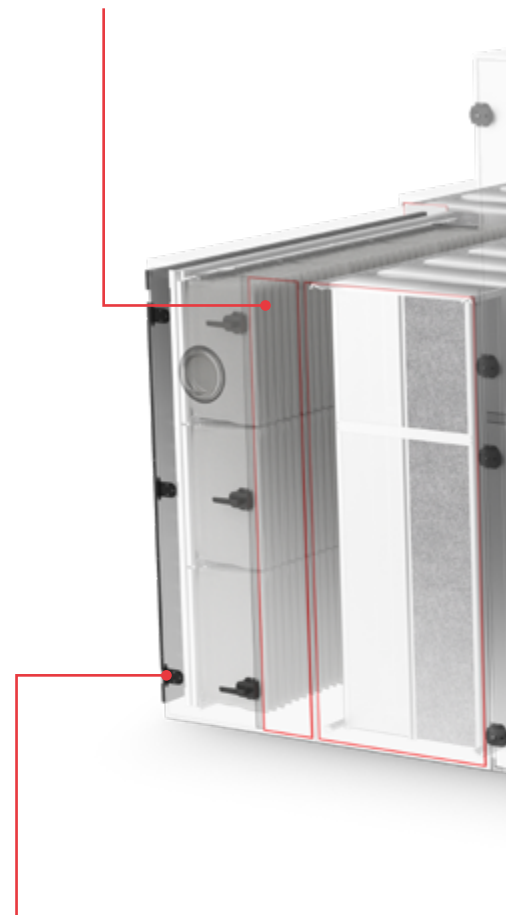
Casing specifications confirmed by TÜV SÜD as per DIN EN 1886

Thermal transmission category	T2
Thermal bridge category	TB2
Casing tightness category	L1
Mechanical strength	D1
Material category to DIN 4102	A1 (non-combustible)

* optical filter display optional

Filter

The right filter for any task. With specially developed filters, WOLF goes beyond the requirements of standards, e.g. pocket filters without ground contact for top hygiene.



Louvre dampers

Airtight, externally mounted or integrated as per DIN EN 1751 standard, casing tightness category 2 and 4, optional double lip, zinc-plated, powder-coated or stainless steel finish. Especially hygienic: The gears are outside of the airflow.

Casing panels

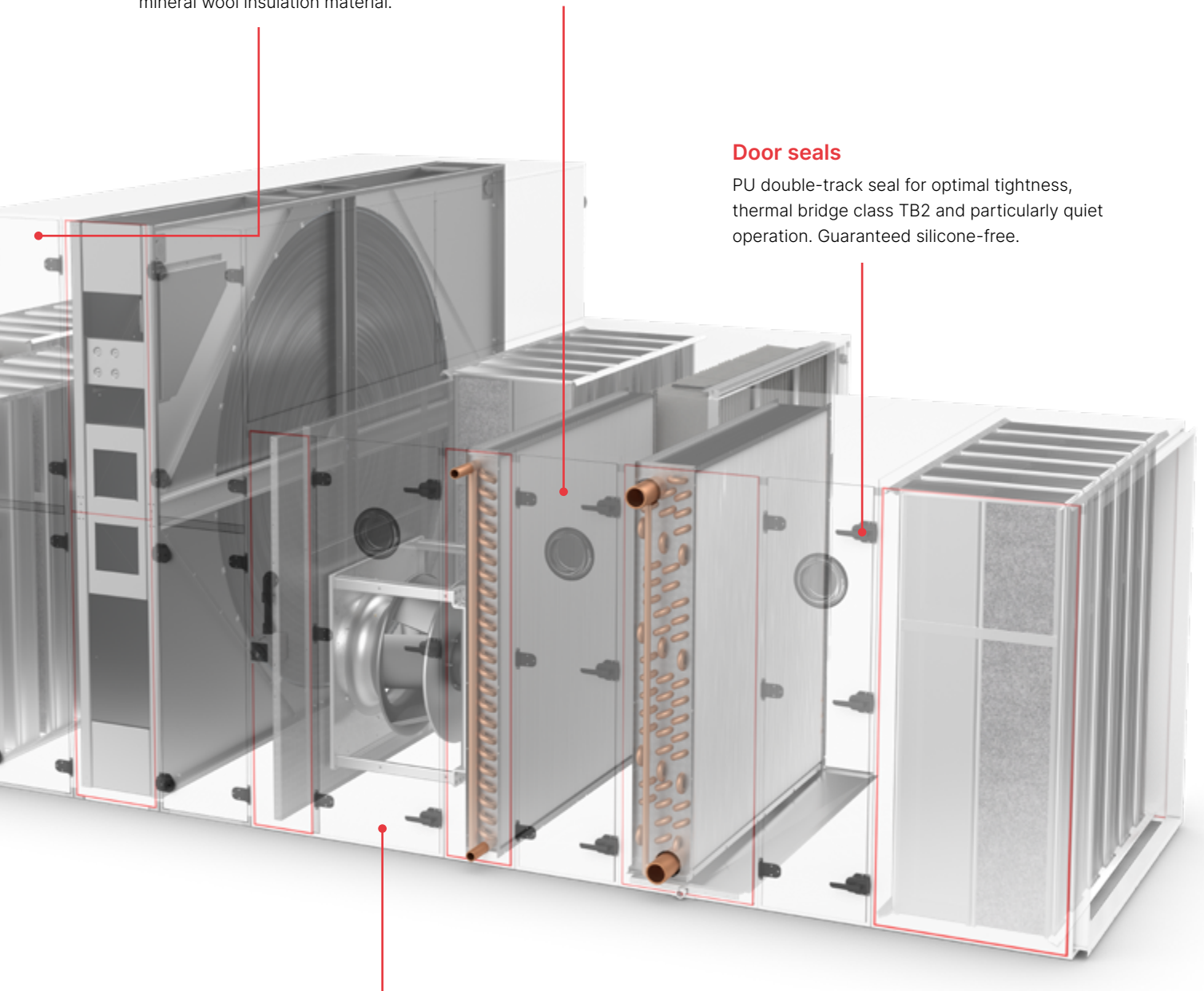
Removable, smooth surface, thermally decoupled, with 50 mm thick, high-quality, non-combustible mineral wool insulation material.

Doors

All doors equipped with glass fibre-reinforced handle and rotary closure with automatic safety catch and/or lever/twin-lever closure, optionally lockable.

Door seals

PU double-track seal for optimal tightness, thermal bridge class TB2 and particularly quiet operation. Guaranteed silicone-free.



Coated for indoor or outdoor use

Powder-coated in any RAL colour or finished with saltwater-resistant C5-M paint.

Field devices, actuators and sensors

Individually matched and tested quality components.



Custom appliances KG Flex

Some of the product highlights

- **Maximum air flow rates**
Custom solutions for performance requirements up to 350,000 m³/h
- **Unlimited variety**
Variable cross-sections and different module sizes – entirely flexible in terms of size and shape.
- **Highest quality standards**
Extensive know-how in planning and production.
- **Hygiene experts**
State-of-the-art hygiene solutions fully compliant with VDI 6022*.
- **Suitable for every environment**
Developed for indoor and outdoor installation in any environment for a wide variety of applications.

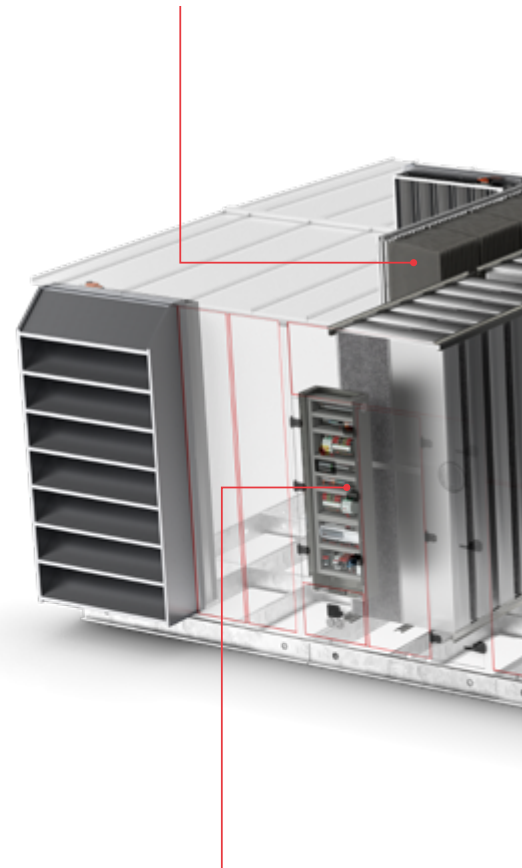
Casing specifications confirmed by TÜV SÜD as per DIN EN 1886

Thermal transmission category	T2
Thermal bridge category	TB2
Casing tightness category	L1
Mechanical strength	D1
Material category to DIN 4102	A1 (non-combustible)

* optical filter display optional

Superior filter management

Quick-release filter systems for flexible and fast filter management. Many different filter variants are possible for any application.



Modern control system

As external control cabinet or integrated into the appliance. Easy connection to building management systems.

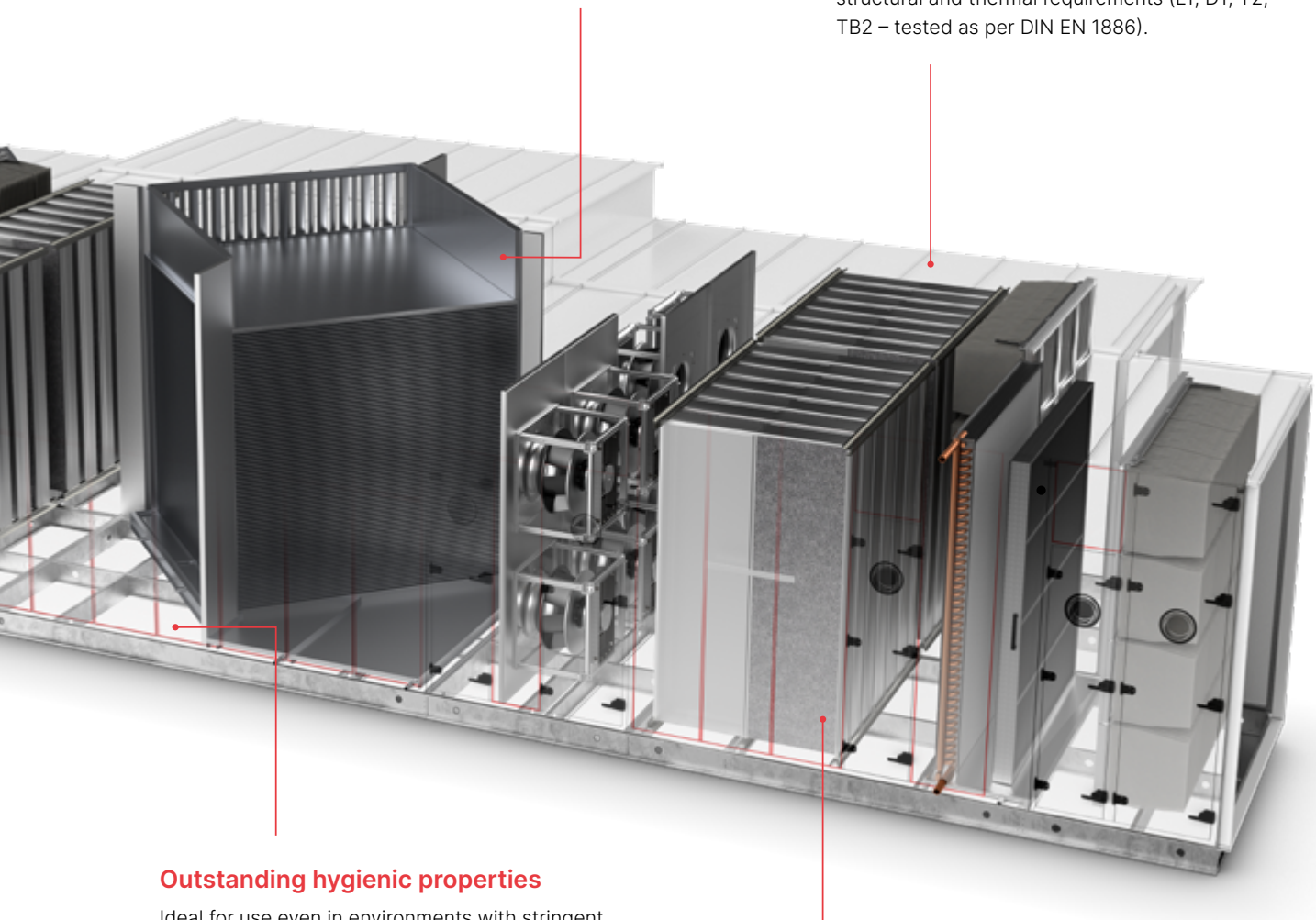


Choice of heat recovery options

Energy-efficient and individually selectable energy recovery systems with scrupulous hygiene standards from the latest generation of technology, e.g. rotary heat exchangers or run-around coil systems.

Optimal casing characteristics

New casing design made of thermally isolated 60 mm aluminium profile developed for the highest structural and thermal requirements (L1; D1; T2; TB2 – tested as per DIN EN 1886).



Outstanding hygienic properties

Ideal for use even in environments with stringent hygiene requirements. Smooth trays and surfaces completely in accordance with VDI 6022*.

Flip&Clean silencer

Easy maintenance and cleaning of the silencer baffles.



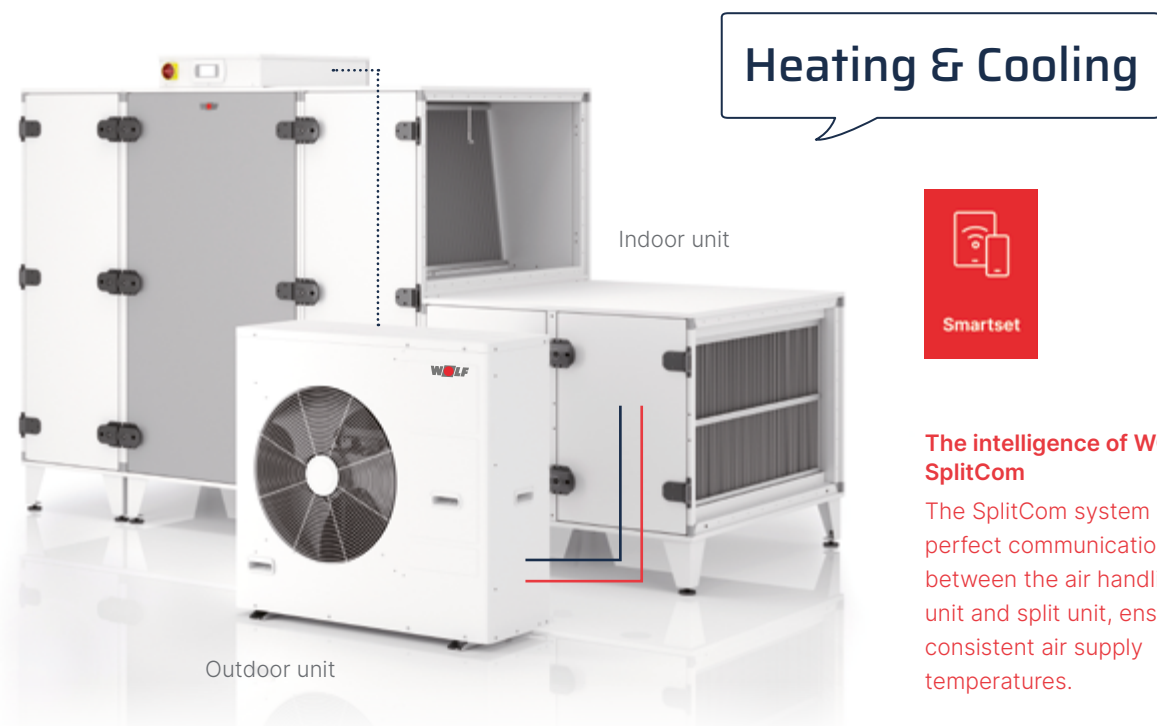
WOLF Clima Split system

Your elite partner for heating and cooling

The WOLF Clima Split system consists of an air source heat pump equipped with inverter for connection to a direct evaporator in the air handling unit. The split unit is installed outdoors and is equally suited to cooling (4-24 kW) and heating (4.5-27 kW). The unit can be used in new systems or for retrofitting.

The new Clima Split system at a glance:

- Perfect communication between air handling unit and split unit by means of the SplitCom communication system
- Constant supply air temperatures
- Smart defrosting management
- Up to 3 split units can be combined in a single cascade
- Max. cooling capacity: 72 kW, max. heating output: 81 kW
- Extremely quick response speed for changing air flow rates
- Compatible with the CKL evo, CRL and KG Top appliance series and controllable via a common controller
- No precautions against freezing pipes necessary!



The intelligence of WOLF SplitCom

The SplitCom system enables perfect communication between the air handling unit and split unit, ensuring consistent air supply temperatures.

Integrated heat pump and cooling technology

Optimised for specific applications and projects

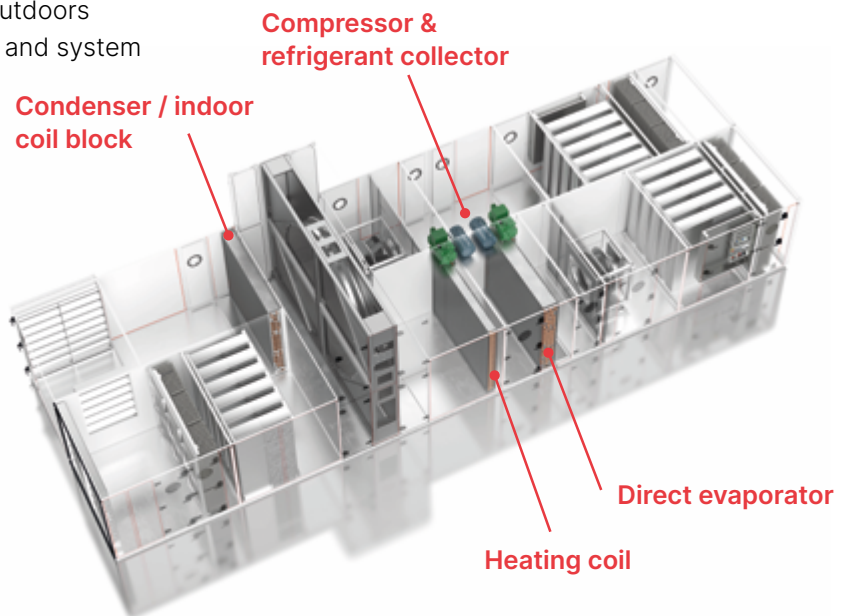
With the modular and individual air handling units from WOLF, cold and heat can also be generated directly in the unit. All necessary components of the cooling process are assembled and tested in the factory. We offer both modular and fully customised solutions that can be fine-tuned to the specific application.

Advantages:

- Wide performance range for cooling & heating
- Integrated and decentralised heating and cooling supply
- Plug & play for particularly rapid installation
- Perfect interplay between compressor and control unit
- No danger of freezing pipes
- Maximum efficiency by using the thermal energy of the extract air
- No external technology required outdoors
- Extensive know-how in consulting and system dimensioning

Three implementation options:

- Cooling: Integrated chiller
- Heating: Integrated heat pump
- Cooling & heating: Integrated reversible heat pump



Compressor		Digital Scroll	Semi-hermetic reciprocating piston	Semi-hermetic reciprocating piston
Output control		Variable	4-stage / 6-stage	Variable
Output range	kW	7 - 35	30 - 130 / 150 - 250	10 - 140

Energy centre

WOLF know-how: Unique system competence

WOLF combines ultra-modern air handling unit technology with innovative heating systems in a single module. The “all-in-one solution” consists of:

- AHU with highly efficient heat recovery
- Integrated heat pump and cooling technology
- Heating system
- DHW heating

The system is suitable for any type of boiler selected by the operator. Thanks to the measurement, control and regulation technology from WOLF, the whole solution works completely independently.

Advantages:

- Delivered ready for connection on a base frame
- Rapid deployment with a single lift
- Minimal disruption to operations
- Large system range: Heat pumps, solar technology, gas/oil condensing boilers, combined heat and power generation
- Easy expansion for additional on-site consumers
- Uniform control and regulation technology avoids interface problems
- Interfaces for building management systems



Fanwall



Advantages:

- Highly suited for larger air flow rates
- Hygienic, open floor even with high air flow rates
- Redundancy mode possible
- Extremely small installation length
- Perfect distribution of the air flow to the next section (replaces diffuser)

Optionally with fan wall damper:

- No air recirculation through inactive fan (redundancy mode)
- No additional electrical connection necessary
- Control of the fans via ModBus

Hygroflow



Advantages:

- Exact humidification performance through proportional humidification control
- Only 900 mm overall length, regardless of the size of the air handling unit
- Particularly flexible with fan situated on the suction or pressure side
- Removable dual-stage aerosol separators for easy access and aerosol-free air
- Certified hygienic design as per VDI 6022*, confirmed by TÜV Nord
- Individually configurable
- All components from WOLF to avoid interface problems

* optical filter display optional

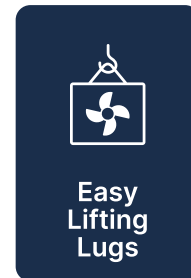
EasyLifting

The air handling unit spreads its wings

Difficult site conditions for engineers and installers? WOLF has the solution: the Easy Lifting System. It makes transport onto or into a building much easier, and the installation of these functional units becomes quicker and more accurate. It's so simple that even our largest components, such as rotary or plate heat exchangers, can be easily brought into any building or positioned on the roof.

Advantages:

- Easy handling and installation
- Lifting lug for particularly straightforward lifting by crane or helicopter
- No balance problems: Lifting from the top instead of from the bottom (with bars, rails, etc.)
- Cube connector for quick assembly and perfect tightness class L1, in compliance with DIN EN 1886
- Optimised design of large components, such as rotary or plate heat exchangers



Lifting lug

Suitable for lifting by crane or helicopter.



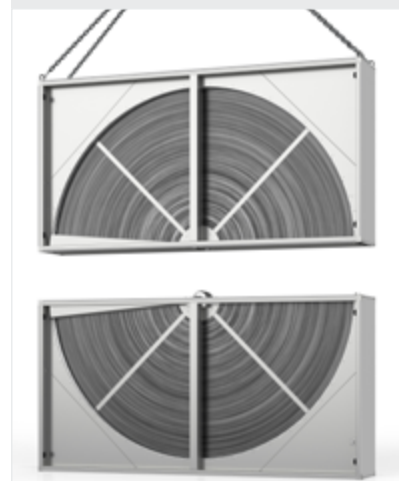
Cube connectors

For quick assembly with perfect tightness.



Rotary heat exchanger

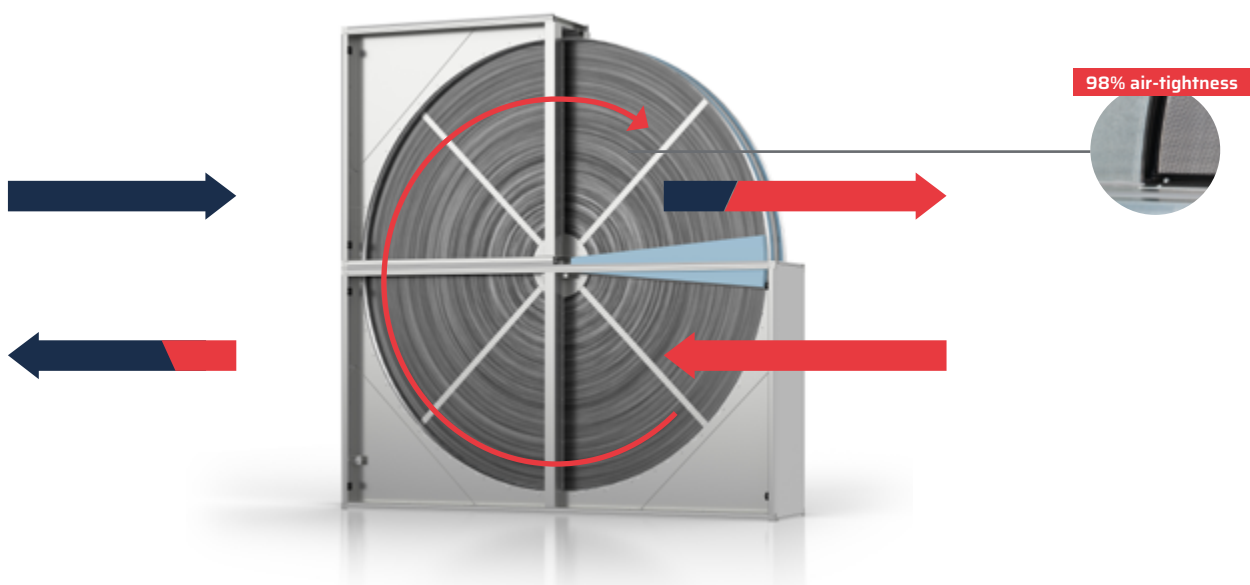
Straightforward installation in two modules.



SuperSeal

Uncompromising leak protection

With the SuperSeal system from WOLF, maximum air handling hygiene is guaranteed. No dirt particles can get into the device via joints. In addition, the heat recovery minimises potentially contaminated circulating air – a decisive advantage, especially if the room air may be contaminated with viruses.



Doors & casing

The robust doors have a pressure stability (positive and negative pressure) of up to 2,000 Pa. The door panel is fitted with a PU double-track seal and thus achieves thermal class TB2 as per EN 1886. In combination with the visually striking red sealing profiles, WOLF air handling units achieve tightness class L1 according to EN 1886 as standard. And this applies equally to outdoor and indoor units.

Filter

The high-quality filters according to ISO 16890 are set in specially designed frames and clamping devices to achieve the lowest possible filter bypass leakage for hygienic indoor air.

Labyrinth sealing system

- Labyrinth seal mounted directly on the edge of the rotor
- No extra fixation or readjustment required
- Leakage rate < 2%
- 4-fold cascade seal and purging chamber on the rotor hub
- Larger area for heat recovery
- Temperature transfer rate of over 90%

High-performance run-around coil system

with hydraulic station

The solution for highly efficient heat recovery in areas with particularly stringent indoor air quality requirements.

The run-around coil system at a glance:

- 100% separation of supply/extract air
- Maximum efficiency thanks to the optimum ratio of heat flows, which cannot be achieved with systems assembled on site
- Hydraulic unit with minimised pressure drop, HE pump with variable output control and precise flow rate capture using ultrasonic meters
- Optional injection of heating/cooling energy
- Complete integration into the WOLF WRS-K air handling control unit
- Continuous function and performance monitoring
- Extremely compact design, fits through every door
- Also available in a weatherproof version
- Now also controllable via the BMK T10





Hygiene applications - made by WOLF

When cleanliness also means purity

If required, WOLF KG Top devices are designed strictly according to the hygiene guideline DIN 1946 – Part 4 and built with the greatest care. For engineers and developers, this guarantees straightforward planning, problem-free approval and safe operation in hospitals, clean rooms and areas with the strictest hygiene requirements.

Clean air of the highest quality: The hygiene versions of the WOLF AHUs are suitable for highly sensitive, category 1A air flows and can be integrated into low-turbulence, displacement flow ceilings in operating theatres, for example.



Strict adherence to the design rules of DIN 1946 – Part 4, such as:

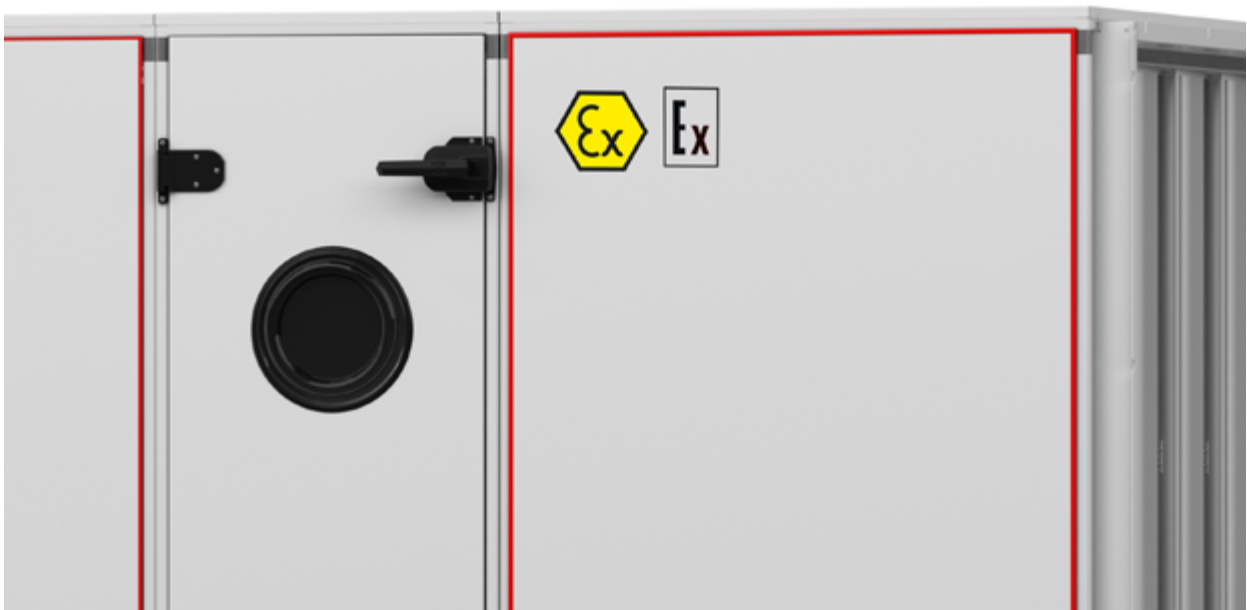
- Smooth interior surfaces can be cleaned leaving no residues
- Inside of floor panels made of stainless steel 1.4301
- Insides of wall and top panels with powder coating (optionally stainless steel 1.4301)
- Stainless steel filter mounting frame with foam seal, gapless
- CuAl heating coil with coated frame or stainless steel 1.4301 and minimum fin spacing of 2.0 mm

ATEX

Explosion-proof design

A comprehensive risk and hazard analysis forms the basis for effective explosion control measures. At the customer's request, units of the KG Top series can be supplied in an ATEX version.

TÜV SÜD confirms that WOLF appliances and components comply with Directive 94/9/EC (ATEX 95) for use in accordance with their intended application in areas at risk of explosion with safety categories 2G and 3G, temperature classes T1 to T4 or deployment zones 1 and 2.



Special features of WOLF air handling units in ATEX design:

- All casing components and fitted parts are electrically conductive and earthed
- Air filter with filter medium in conductive filter mounting frame
- Fans with ATEX certification according to classification
- All components (coils, silencers, louvre dampers, heat recovery, etc.) are electrically conductive and earthed
- No use of materials that enable sparks or electrostatic charging
- All fitted parts are also ATEX-compliant

A checklist specially developed by WOLF makes it easier for design engineers, operators and system installers to classify air handling units according to the directives.

Control systems

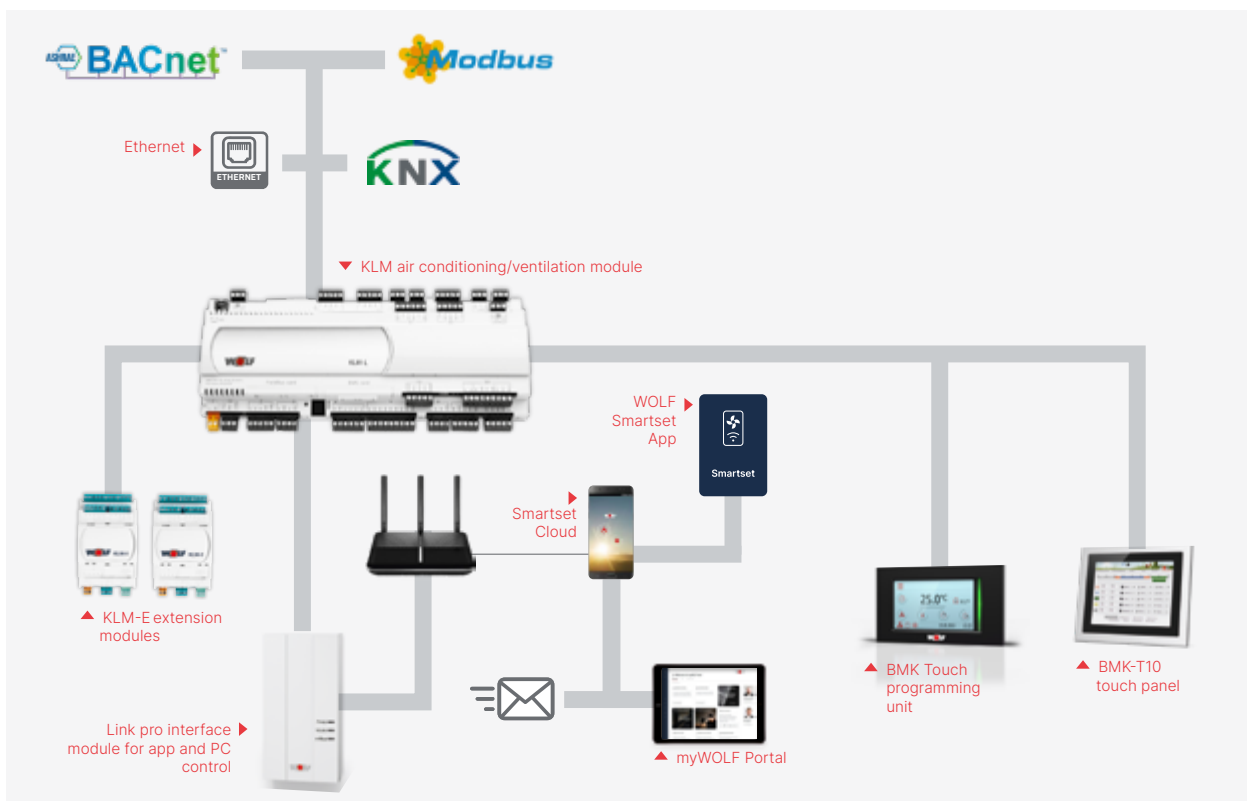
Intelligent and designed with care

Accurate control is essential for optimum operation of AHUs and ventilation systems. The WOLF WRS-K control system makes operation even easier, ensures the best possible energy efficiency and enables individual system configuration.

Easy retrofitting or expansion of functionality (e.g. humidification, adiabatic cooling) as well as communication with a building management system (e.g. via Modbus or BACnet) is possible.

WRS-K key features:

- Software configured individually for each AHU
- Perfect interplay between AHU and control system
- Simple commissioning
- Custom programming possible on request
- Factory pre-programmed control application, optimally calibrated for the specific unit configuration
- Subsequent functional extensions can be configured at a later time using the programming unit
- BMK Touch programming unit in over 24 languages
- Connection to the internet is child's play with WOLF Link pro



Plug & Play

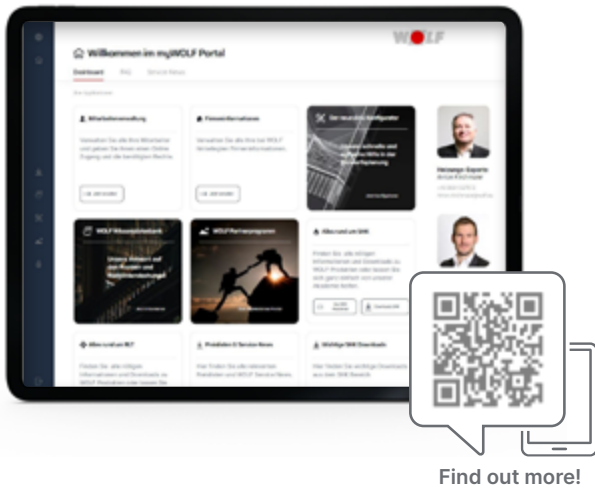
Reduce installation times – avoid mistakes

We provide fully prewired units ex works, not only for our compact models but also for all other WOLF appliances.

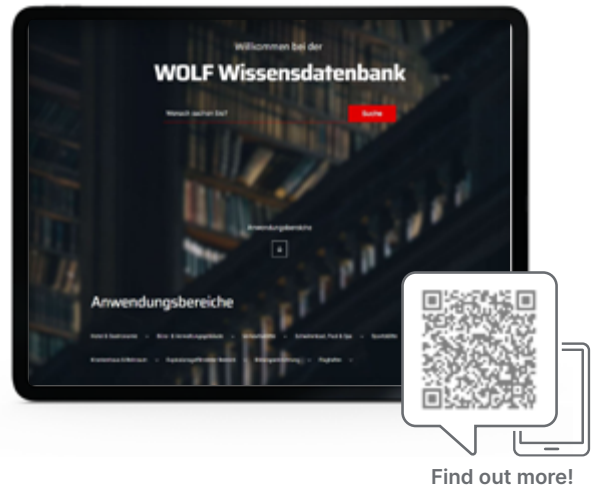
- One contact person – no further interfaces
- Perfect and optimised routing of all electrical wiring
- Top quality and thus high operational reliability and best hygiene properties (VDI 6022*)
- Maximum efficiency through perfect sensor positioning
- Plug & play: Preconfigured to minimise the work required on site



* optical filter display optional



Find out more!



Find out more!

The new myWOLF Portal

All answers for the needs and challenges of our customers digitally in one place – the new myWOLF portal is a central digital services platform.

- Intuitive operation
- State-of-art technical knowledge
- Product information
- Overview of all services
- AHU online configurator for compact and modular devices
- Extensive knowledge base
- Overview of WOLF seminars

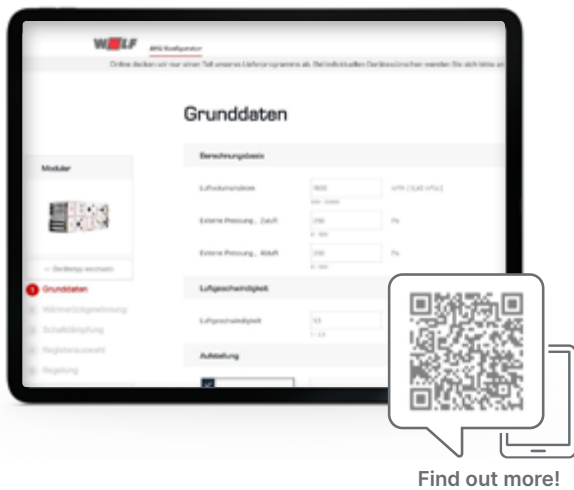
Knowledge base

Planners and system builders will find a detailed knowledge database in the myWOLF portal, which is constantly being expanded.

- Digital reference work
- Important information on the legal aspects of AHU planning
- Application-specific structure with practical examples
- Free registration

Tools

Support in planning and design

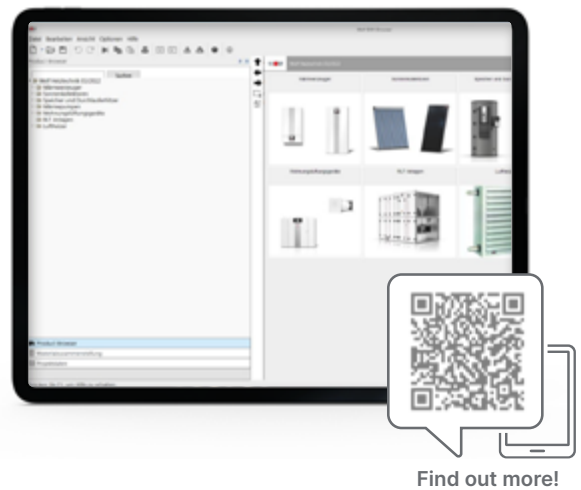


Find out more!

AHU online configurator

Just enter the key data and you are only a few clicks away from finding the right air handling unit, including an initial design specification. The generated 3D representation of the implemented configuration, information on efficiency classes and the outputted drawings and data sheets form an excellent basis for the next planning steps.

- Only few basic parameters needed
- Predefinition of desired optional components, e.g. heaters, coolers, silencers
- Files exported as dxf, dwg, ifc, technical drawings as PDF, tender documentation, etc.
- BIM-ready: Output via WOLF BIM browser in Revit
- Available on the go - smartphone and tablet compatible



Find out more!

BIM browser

Building information modelling, or BIM for short, is revolutionising the world of planning. WOLF is BIM-ready and provides designers with Revit-compatible 3D files for all heating and air handling products. System design has never been this easy.

Product advantages

- Time savings
- Compatible with Autodesk Revit
- Provided as ICF file



WOLF Campus

Knowledge transfer reinvented



Competence and knowledge are essential for your business success. This has never been more true given the ever-increasing pace of change in our high-tech world. But it isn't merely the technology that is changing; the same is true of requirements, expectations, regulations and guidelines. That is why we offer you practical training courses in the field of air handling, ventilation and control. We also bring you reliably up to date on current laws and standards.

The broad selection of WOLF seminars is aimed at both heating and air handling professionals such as plant engineers, technicians, architects and specialist planners. Through our seminars knowledge is imparted directly by qualified specialist. And the demand is proof of quality. More than 15,000 participants every year count on WOLF training to make them fit for the market and the competition.

We share our knowledge to make your work easier.



More information:
www.wolf.eu/wolf-campus

Product Range Overview

WOLF AHUs, Technologies, Air Heating & Fan Systems

Compact AHUs



CRL-iH, -iV, -A evo
 1,400 – 6,100 m³/h
 Cross-counter-current
 heat exchanger



CFL-WRG
 1,000 – 3,200 m³/h
 Slimline device



CFL-EC
 1,000 – 3,200 m³/h
 Slimline device



CFL edu
 675, 1,000 m³/h
 Decentralised ceiling
 ventilation unit



CRL-iH, -iD, -iDH, -A
 1,300 – 9,000 m³/h
 Rotary heat exchanger



CRL-iH, -A evo max
 11,000 – 19,500 m³/h
 Rotary heat exchanger

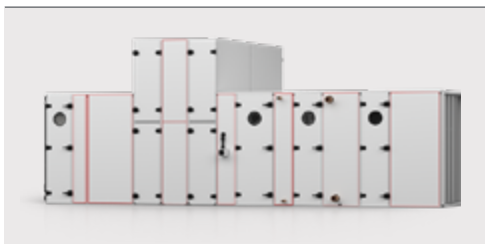


CKL Pool
 2,000, 3,000 m³/h
 Pool air handling unit



CGL 2 edu
 1,000 m³/h
 Decentralised
 floorstanding unit

Modular AHUs



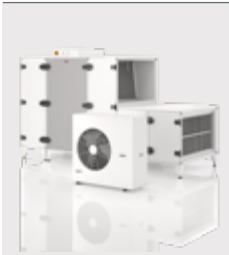
KG Top modular AHUs
 1,000 – 40,000 m³/h @1.5 m/s

Individual AHUs



KG Flex individual AHUs
 1,000 – 350,000 m³/h @1.5 m/s

Technologies



Clima Split system
 Heating: 4.5 – 27 kW
 Cooling: 4.0 – 24 kW



High-performance run-around coil system



HygroFlow LPS/HPS Spray humidifier



Energy centres

Air heating & fan systems



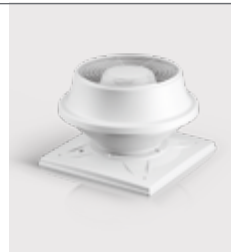
LH-EC), LH-ATEX
 Up to approx. 100 kW
 Air heater



TopWing TLH, TLHK, TLH(K)-EC
 Up to approx. 100 kW
 Air heater



TLHD (-K), (-EC)
 Up to approx. 60 kW
 Ceiling-mounted air heater



DV-2
 Up to 13,000 m³/h
 Roof extract fan



TL-2
 Up to 8,300 m³/h
 Warm air curtain



ER
 Up to 57,200 m³/h
 Smoke extract fan



LD 15
 Up to 1,500 m³/h
 Ceiling mounted fan

Our experienced advisors will be happy to support you:

Air Handling Nord

Kieler Str. 303
22525 Hamburg
Tel. +49 (0)40 42934680
E-Mail: vkb.nord@wolf.eu

Air Handling Ost

Seestraße 35
14974 Ludwigsfelde
Tel. +49 (0)3378 209670
E-Mail: vkb.ost@wolf.eu

Air Handling West

Katzbergstr. 3a
40764 Langenfeld
Tel. +49 (0)2173 6851030
E-Mail: vkb.west@wolf.eu

Air Handling Süd

Industriestraße 1
84048 Mainburg
Tel. +49 (0)8751 74-2650
E-Mail: vkb.sued@wolf.eu

WOLF Italia S.r.l.

Via XXV Aprile, 17
20097 S. Donato Milanese
Tel. +39 02 5161641
www.wolf.eu/it-it

WOLF Energiesystemen BV

Blauwe Engel 1
8265 VB Kampen
Tel. +31 38 3335086
www.wolf.eu/nl-nl

WOLF GmbH in Central Asia

Nurlan Kapparov Str. 402, R6
050044 Almaty, Kasachstan
Tel. +7 (702) 620-32-08
www.wolf.eu/en-de

PRO-KLIMA

Gradna 78e
10430 Samobor, Hrvatska
Tel. +385 1 6546343
E-Mail: proklima@proklima.hr
www.proklima.hr

WOLF France S.A.S.

ZAC de Belles Fontaines
99 route de Versailles
91160 Champlan
Tel. +33 1 60136470
www.wolf.eu/fr-fr

WOLF Iberica S.A.

Avenida de la Astronomia 2
28830 San Fernando de Henares
Tel. +34 91 6611853
E-Mail: info@wolfiberica.es
www.wolf.eu/es-es

WOLF Technika Grzewcza Sp. z o.o.

Ul. Sokolowska 36
05-806 Komorow Warszawa
Tel. +48 22 7206901
www.wolf.eu/pl-pl

WOLF GmbH

Rep. Office Greece

Ifaistionos 17 & Damonos, Pylaia
55535 Thessaloniki
Tel: +30 23 10322000
www.wolf.eu/el-gr

**You have not found a contact person or would like to give us feedback?
Please feel free to contact us at: int-sales@wolf.eu**

Subject to technical modifications. Please note that only the WOLF product is shown in the images of the product. You will usually need incoming and outgoing lines which are connected to the WOLF product from the outside.

WOLF GmbH
Postfach 13 80
84048 Mainburg, Deutschland
Tel. +49 (0)8751 74-0
E-Mail info@wolf.eu
www.wolf.eu



Perfectly in tune with you.



We look forward to hearing from you.